

**WHO TO CALL:
IMPORTANT TELEPHONE
NUMBERS:**

In an emergency, always call 9-1-1

Provide the operator with answers to their questions in a clear, calm voice.

In order to expedite calls for service, it is important that they are routed to the appropriate agency. Here is a list of important phone numbers:

City of Countryside:

Please do not call the city numbers for power restoration updates, you should contact ComEd.

- City Hall – Main 354-7270
- Police Dept. (non-emergency) 352-2171
- Public Works Department 354-3390

Fire Protection:

Pleasantview Fire Protection 352-9229

Utilities:

For any immediate life or property safety issues, always call 9-1-1 before notifying the impacted utility company.

**ComEd 1-800-Edison-1
(1-800-334-7661)**

For reporting power outages, lines down, trees on power lines, OR to receive restoration estimates.

- Nicor Gas 1-888-Nicor-4u
(1-888-642-6748)
- AT & T 1-800-480-8088
- Comcast 1-866-594-1234

Hospitals:

LaGrange Memorial Hospital 245-9000
Hinsdale Hospital 1-630-856-9000



E-MAIL NOTIFICATIONS:

The City of Countryside has implemented a web blast e-mail notification system to provide updates on city events, emergency situations and other major events. To sign up for this **FREE** service, please go to the city's web site:

www.countryside-il.org

Once on the site, go to the **Residents** tab and click on **Mailing List**. Complete the request information and you are then registered to receive future web blasts.



Countryside Emergency Management

5550 East Avenue
Countryside, Illinois
Phone (708) 354-8484
Fax (708) 354-8562

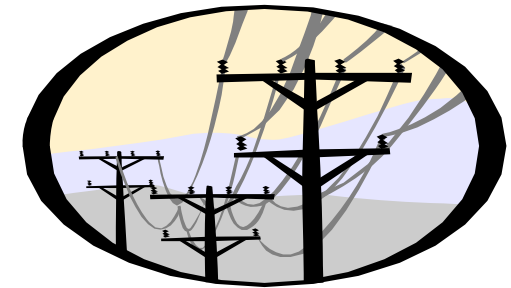
Rev. 8/01/2011 – R1-FINAL

THE POWER IS OUT!

HOW TO STAY SAFE!

PLAN, PREPARE, PRACTICE

**Safety Tips for residents
during a power outage**



Prepared by:

The City of Countryside

Emergency Management



Power is out or lines are down:

- After the storm be watchful for trees and downed power lines especially in the dark. If local law, fire or emergency management is not on scene report the location to ComEd as soon as possible.
- Never attempt to touch, move or drive over downed lines. All downed lines should be considered as energized and extremely dangerous.
- If a power line falls on your vehicle while you are in it, **stay in the car** and wait for emergency personnel.
- Never attempt to turn off power at the breaker box if you must stand in water to do so.

Keeping food safe:

- Do not open the refrigerator and freezer doors. Keep them closed as much as possible to maintain the cold temperature.
- A newer refrigerator will keep food safely cold for about 4 hours if it remains closed.
- A full freezer will hold the temperature for approximately 48 hours (24 hours if it is half full) if the door remains closed.
- Dry or block ice can be used to keep your refrigerator as cold as possible or move your items to a cooler to help maintain safe temperatures. The following link provides additional information: www.ready.illinois.gov

***Always remember this simple rule:
IF IN DOUBT, THROW IT OUT!***

Using Generators:

Residents may use a generator to provide temporary electric during an outage but always remember these safety rules:

- Never “back feed” your house from a generator. If ComEd is working it could pose a risk to their workers or if power is restored it could damage your electrical service or appliances.
- It is best to run a heavy duty extension cord and plug the appliance directly into the extension. If the cord becomes hot, the extension cord is undersized and should be replaced with a heavier gauged cord.
- Do not overload the generator – only run the essentials and if needed, cycle from one appliance to the next (only after shutting off the generator power).
- Never refuel a generator that is running. Shut off the generator and let the exhaust cool before refueling.
- Never run a generator within a closed area or where the exhaust fumes will enter the home. Carbon Dioxide from the exhaust can build up and is an odorless gas and can result in death.
- Always keep the exhaust away from any flammable materials.



Protecting your appliances:

Electrical fires can occur when there is a power surge upon restoration of electrical service.

To help prevent this hazard the following recommendation are provided:

- Turn off or unplug all electrical appliances and devices that were on before the power went off
- Television sets, washers, dryers, refrigerators and freezers should also be unplugged.
- Remember your computer(s)! They should also be unplugged.
- You should leave one lamp on so you know when the power is restored.

Staying cool in the heat:

The City of Countryside has designated the ***City Hall facility located at 5550 East Avenue*** as a cooling and warming shelter. This facility is open and staffed 24/7 by officers of the Countryside Police Department. Some general rules for the shelter are:

- Pets are not allowed.
- Residents are responsible for any personal hygiene items.
- Restrooms are available; however there are no shower facilities.
- Water fountains and a soda vending machine are available for refreshments.
- The cooling center is designated for short term relief. It is the resident's responsibility to arrange extended accommodations.

