

FOR LEASE

2,400 Sq. Ft. Office Suite

6432 Joliet Road, Suite D - Countryside, IL

Lease Rate: \$18.95 psf



- 1994 single story, masonry construction
- Occupancy 11/1/23
- Separately metered gas & electric
- Well maintained
- Fully sprinklered
- Operable windows
- Multi tenant office building

- No common areas/direct access to suite
- 44+ car parking
- On site ownership
- Easy access to I-55 and I-294
- Great visibility of Joliet Road
- Site size approx. 1 acre (109' x 412')
- 9' ceiling height
- Five (5) private offices

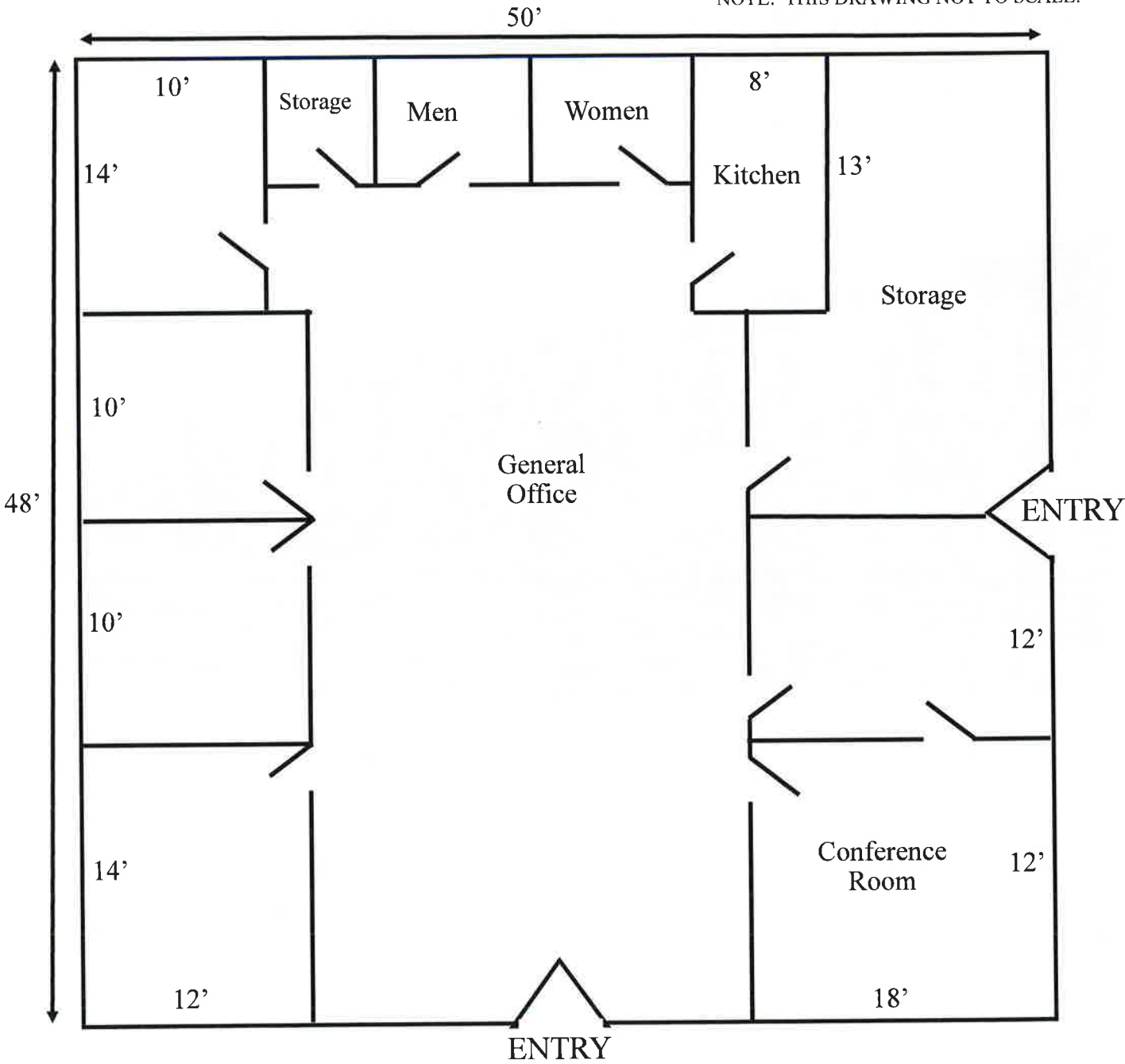


Exclusively Offered by:
Daniel Chopp
(708) 387-2640
dan@choppcommercial.com

All information herein is from sources deemed reliable but not guaranteed accurate.
Subject to errors, omissions, and to change of price and terms, prior sale or lease, all without notice.

6432 Joliet Road, Suite D - Countryside, IL

NOTE: THIS DRAWING NOT TO SCALE.

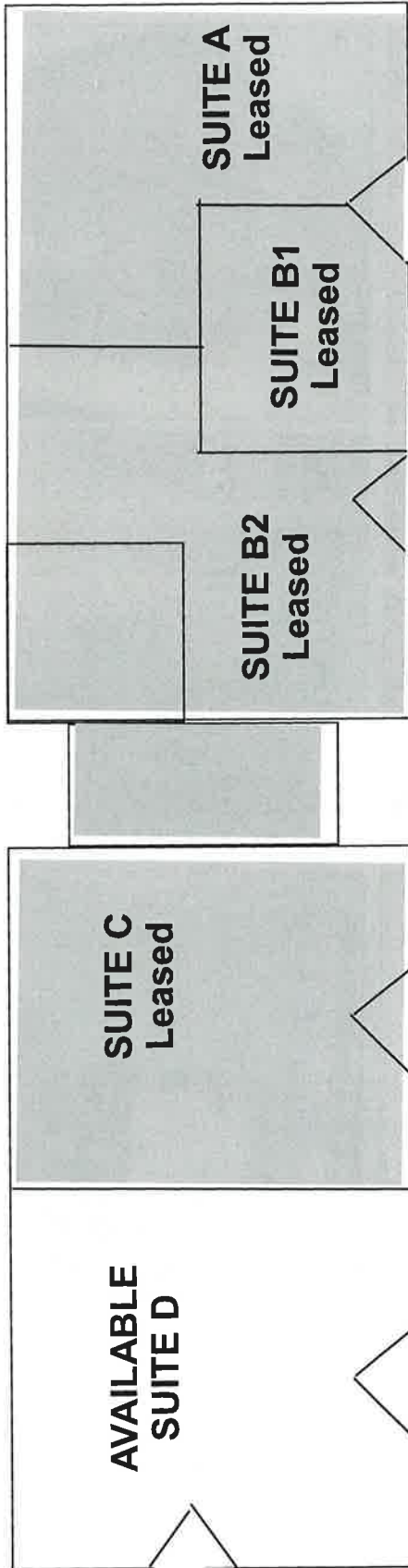


Exclusively Offered by:
Daniel Chopp
(708) 387-2640
dan@choppcommercial.com

All information herein is from sources deemed reliable but not guaranteed accurate. Subject to errors, omissions, and to change of price and terms, prior sale or lease, all without notice.

6432 Joliet Road, Suite D - Countryside, IL

NOTE: THIS DRAWING NOT TO SCALE.



Exclusively Offered by:
Daniel Chopp
(708) 387-2640
dan@choppcommercial.com

All information herein is from sources deemed reliable but not guaranteed accurate. Subject to errors, omissions, and to change of price and terms, prior sale or lease, all without notice.

6432 Joliet Road, Suite D - Countryside, IL



CHOPP
COMMERCIAL
PROPERTIES

Exclusively Offered by:
Daniel Chopp
(708) 387-2640
dan@choppcommercial.com

All information herein is from sources deemed reliable but not guaranteed accurate.
Subject to errors, omissions, and to change of price and terms, prior sale or lease, all without notice.